

# The Nursing Record

"QUI NON PROFICIT, DEFICIT."

No. 73.

THURSDAY, AUGUST 22nd, 1889.

VOL. 3.

## Contents.

OUR ALBUM.—NOVICE, OR PROBATIONER, ROMAN CATHOLIC HOSPITAL, NORTH BRABANT, HOLLAND	113
EDITORIAL	113
LECTURES TO NURSES ON ANTISEPTICS IN SURGERY.—III. By E. STANMORE BISHOP, F.R.C.S. Eng.	115
THE "TORTOISE" FIELD HOSPITAL. By MRS. J. GAY	116
NURSING IN NEW ZEALAND	119
NURSING ECHOES	120
HOSPITAL INTELLIGENCE	122
EXTERIORS AND INTERIORS	123
"NURSING RECORD" BENEVOLENT FUND	124
OUR INSTITUTIONS	124
WOMEN AND THEIR WORK	125
CORRESPONDENCE	126
REPLIES TO CORRESPONDENTS	128
VACANT APPOINTMENTS, WANTED, &C.	128
COMPETITIVE PRIZE ESSAY	128
NOTICES	128

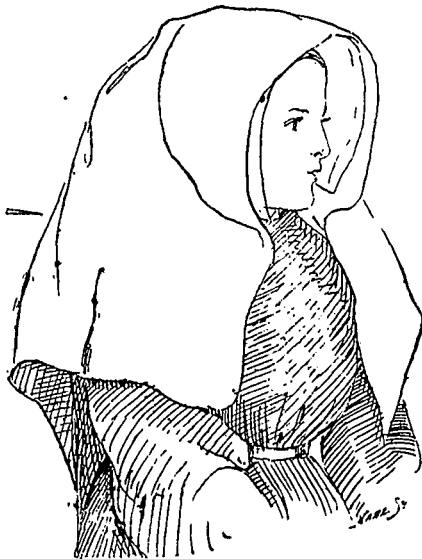
## EDITORIAL.

ONE of the most important features in the Mansion House Meeting was most undoubtedly the public introduction of the question of Midwives into the proposed Registration scheme of the British Nurses' Association. Some months since, when discussing a cognate subject, we suggested in these columns the peculiar appropriateness with which the Registration of Midwives might be combined with that of Nurses. Further reflection has only served to convince us that our proposition was not only feasible, but also in many ways advisable. The relations in which Midwives and Nurses stand to each other at present are almost impossible of definition, and at the same time some attempt must be made to clearly differentiate their relative positions before it can be understood how Registration will affect the former class of workers.

Theoretically, then, a Midwife is a person who attends women in labour, whose duty to the patient begins and ends with the parturient process. Practically, the Midwife's responsibilities are much wider and much more prolonged, because the dangers and anxieties which surround a confinement, and the care and attention which the lying-in woman requires, do not cease with the birth of the child, but, in fact, become all the greater after that event than before it. It appears to us that this is too frequently lost sight of. We are not aware of any accurate statistics upon the point, but believe that it is within the truth to suppose that, for one woman who dies during labour, or within the first subsequent twenty-four hours, at least ten die from more or less preventable causes in the following month, while at least forty more, from the same causes, in the same time, receive harm involving future weeks, months, or even years of illness.

If any of our readers can give us definite figures in this relation we shall be glad, because it would be well that the fact should be realised, and ex-

## OUR ALBUM.



NOVICE OR PROBATIONER, ROMAN CATHOLIC HOSPITAL, NORTH BRABANT, HOLLAND.

[previous page](#)

[next page](#)